

ROADSCOPE9

AI DASH CAM

R9 recognizes up to 22 dangerous driving activities and provides real-time alerts.



FRONT

CABIN

SIDE (L & R)

REAR

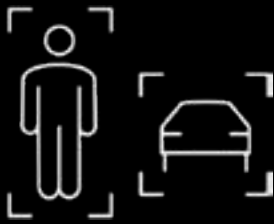


ROADSCOPE9 FEATURES & SPECIFICATIONS



Features

R9 is an AI dash cam that employs edge computing to improve driver safety, prevent accidents, and manage vehicles.



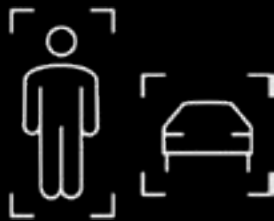
AI Edge Computing



Live Streaming



22 Advanced Warnings



AATS*



Up to 5 Cameras



Cabin Display

* A.I.MATICS Automatic Training System.

A self-learning system that can automatically train and improve deep learning models, enabling R9 to achieve optimal AI results.

FEATURES:

Tail gating
Collision Risk
Reckless Driving
Stop Sign Violation
Redlight Violation
Distraction

Drowsy
Phone Use
Smoking
Illeagal U Turn
Speed Violation
Oneway Violation

Central Line Violation
Harsh Left Turn
Harsh Right Turn
Harsh U Turn
Harsh Switching Lanes
Harsh Overtaking

Rapid Acceleration
Rapid Deceleration
Sudden Start
Sudden Stop
Unfasten Seatbelt
Collision Risk Pedestrian

Specifications

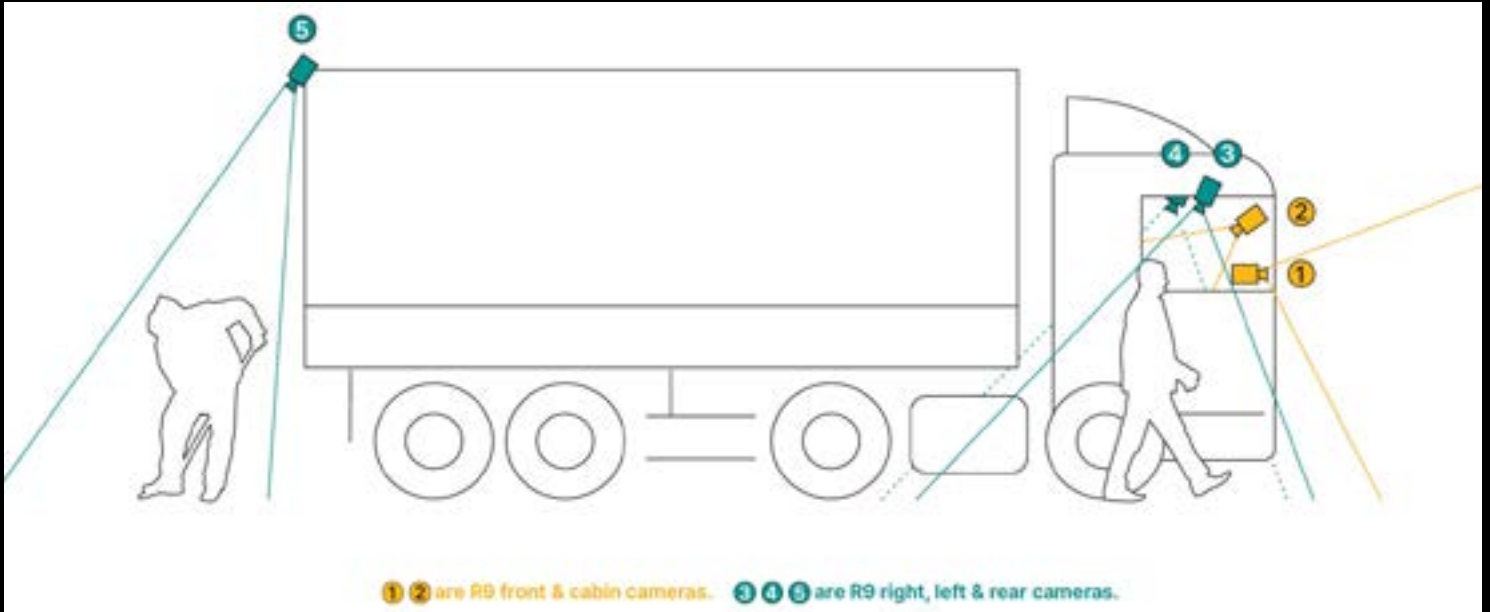
AP	Quad-core Arm Cortex-A53, 1GHz CPU with 1Mb L2 cache
Memory	LPDDR4 1.2GHz
Operating System	RTOS, Linux
CAN bus	1ch CAN ; Default
Storage	Micro SD Card 128G ; Default
Dimension	145x76.2x70.4mm (WxHxD) / 320g
Communication	LTE, Wi-Fi, Bluetooth
Mounting	Mounts to windshield via adhesive tape (Included)
Battery	Internal 1100mAh battery for fallback power when vehicle is off

ROADSCOPE9 AI EDGE TECHNOLOGY



AI Blind Spot Warning

R9 reduces fatal pedestrian and vehicle accidents.



Using AI technology, the truck's blind spots are detected, and the driver is directly notified when an obstacle is present.



Left & right side pedestrian warning



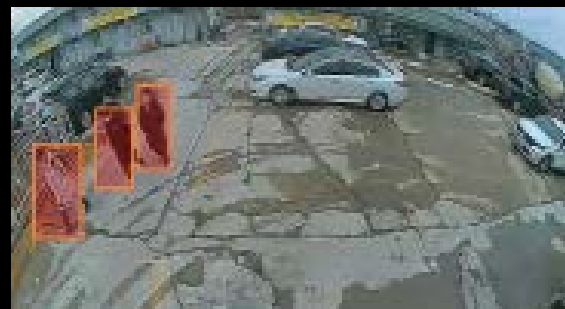
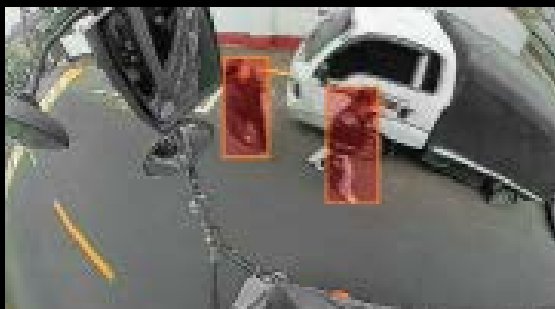
Left & right side vehicle warning



Rear side pedestrian warning

Blind Spot Monitoring

The driver can monitor blind spot situations in real-time.



ROADSCOPE9



Outstanding Edge AI Technology for Fleet Management

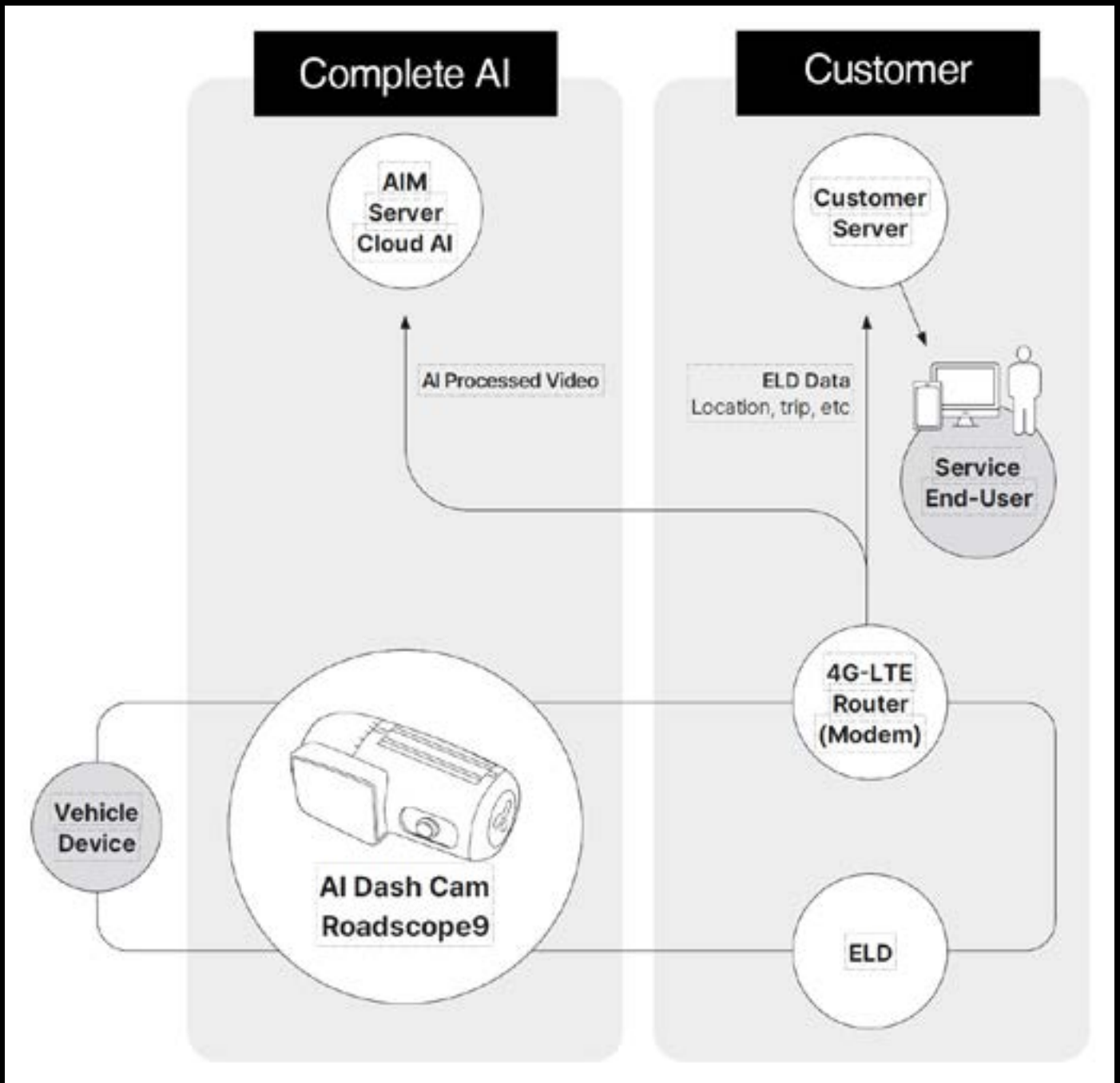


ROADSCOPE9 CLOUD SERVICE



Open API

Complete AI provides developer APIs to build your own web server.



Roadscope9 captures events which are saved on an onboard SD card. On request a recording can be delivered directly to the CT platform for customer to view at their request.

ROADSCOPE9 DATA IN REAL TIME

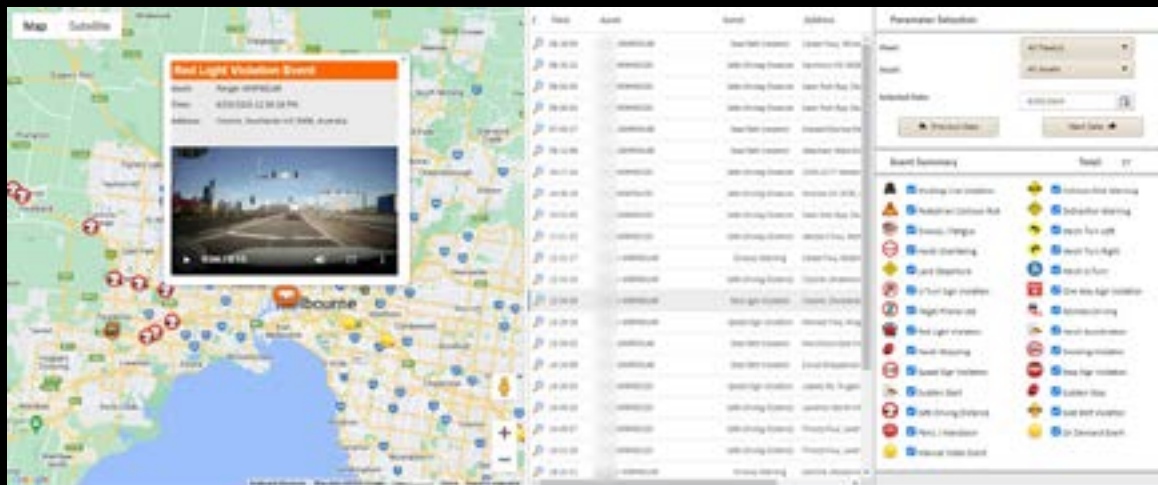


With Complete AI web service called CT Telematics Soltuion, you can deliver R9 data in real-time. This is for management use.



Dashboard

Safety reports, driver coaching, in-cab alerts and real-time video data for all managed vehicles can be monitored through our CT Telematics Solution web service.



Scoring Service

A.I.MATICS unique scoring system analyzes the driver's driving habits and calculates the safety index of the driver.

Rating Parameters			
Target Point Score:	15		
Top Mileage/Tone for Rating:	15	meter	
Top Mileage/Distance for Rating:	2	km/hr	
Rating / Tracking Method:			<input checked="" type="checkbox"/> Weekly <input type="checkbox"/> Monthly <input type="checkbox"/> Quarterly

Vehicle General Events / Violations			
Violated Event	Points Penalty Application		
Drivng Line Violation	0.5	per event	
Callison Pass Warning	0	per event	
Passenger Cabin Air	0.5	per event	
Seat Buckle	0.5	per event	
Reactive Driving Violation	0.5	per event	
Subter Start Warning	0.5	per event	
Subter Stop Warning	0.5	per event	
Safe Driving (Not Setting)	0.5	per event	

Vehicle Manue Events			
Violated Event	Points Penalty Application		
Harsh Turn Left	0.5	per event	
Harsh Cherkling	0.5	per event	
Harsh Turn Right	0.5	per event	
Harsh U-Turn	0.5	per event	
Harsh Acceleration Warning	0.5	per event	
Harsh Braking Warning	0.5	per event	

Score Band Configuration			
Rating / Score Bands	Color	Rating / Scoring Title	
10	Blue	Excellent	
25	Green	Good	
40	Yellow	Fair	
60	Red	Significant Action Required	

Sign Violations			
Violated Event	Points Penalty Application		
U-Turn Sign Violation	1.0	per event	
One Way Sign Violation	1.0	per event	
Red Light Violation	1.5	per event	
Speed Sign Violation	1.0	per event	
Stop Sign Violation	1.0	per event	

Driver Events / Violations (* Requires Driver Facing Camera)			
Violated Event	Points Penalty Application		
Distraction Warning	1.0	per event	
Drivng / Fatigue Warning	0.5	per event	
Edge Phase Line Violation	1.0	per event	
Smoking Violation	1.0	per event	
Seat Belt Violation	1.0	per event	
Phone / Misconduct	1.0	per event	